

SONY[®]

User guide

SmartWatch 3
SWR50

Contents

Getting started.....	4
Introduction.....	4
Overview.....	4
Charging.....	5
Attaching or detaching the wrist band.....	5
Turning on and off.....	6
Setting up your SmartWatch 3	6
Connecting to Wi-Fi®.....	8
Cloud sync.....	9
Learning the basics.....	10
Using the touchscreen.....	10
Dimming and waking up the screen.....	10
Home screen.....	11
Wrist gestures.....	11
Cards.....	12
Viewing status icons.....	14
Basic settings.....	15
Accessing settings.....	15
Screen settings.....	15
Airplane mode.....	16
Theatre mode.....	16
Restarting and resetting.....	17
Using your SmartWatch 3	18
Staying organised with your SmartWatch 3	18
Contacts.....	18
Handling text messages.....	18
Handling emails.....	19
Handling incoming calls.....	20
Navigation.....	20
Viewing your outdoor activities.....	20
Music.....	21
Finding your phone or tablet.....	22
Reminders.....	22
Notes.....	23
Agenda.....	23
Getting quick answers.....	23
Counting steps.....	24
Setting an alarm.....	24
Setting a timer.....	25

Using the stopwatch function.....	25
Checking flight and hotel reservations.....	25
Getting traffic information.....	25
Tracking packages.....	25
Using your SmartWatch 3 as a standalone device.....	25
Android Wear application.....	27
Android Wear on your phone or tablet.....	27
Selecting applications for voice actions.....	27
Installing suggested applications.....	27
Connecting and reconnecting.....	27
Pairing with another wearable device.....	28
Adjusting settings for your SmartWatch 3	28
Android Wear help.....	29
Important information.....	30
Using your accessory in wet and dusty conditions.....	30
Legal information.....	31

Getting started

Introduction

Your SmartWatch 3 accessory is powered by Android Wear and supports voice commands. You can ask questions like “When is my next meeting?” or “How do I get to the train station?” and get answers immediately.

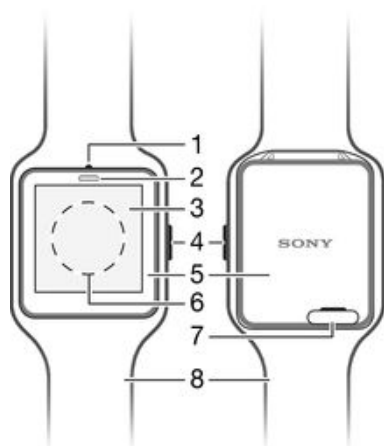
You can also use your SmartWatch 3 to receive and reply to messages, view appointment notifications, and glance at weather updates – all from the convenience of your wrist.

Your SmartWatch 3 features built-in GPS and Wi-Fi® support, and you can pair your SmartWatch 3 with your Android™ phone or tablet using NFC or Bluetooth®. When configuring the Wi-Fi® settings, you can set your SmartWatch 3 to automatically connect to saved Wi-Fi® networks in cases where the connection between your SmartWatch 3 and phone or tablet gets lost. By doing this, both devices can stay synced as long as they have access to a Wi-Fi® network.

The SmartWatch 3 works with any Android™ smartphone or tablet running Android™ version 4.3 or higher. To see if your Android™ device is compatible for use with Android Wear, go to <http://g.co/WearCheck> from your phone or tablet. To extend functionality, you can download new apps from Google Play™ as well as updates to existing apps. You get automatic notifications when such updates are available.

- ! For optimal performance and functionality, use the SmartWatch 3 together with the wristband provided.

Overview

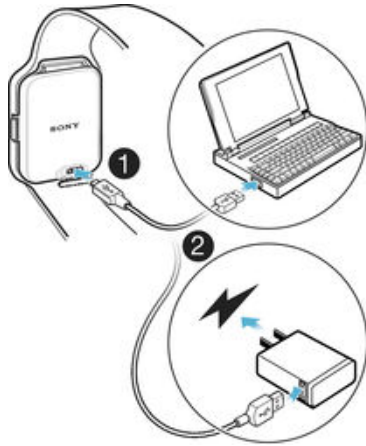


- 1 Microphone
- 2 Light sensor
- 3 Touchscreen
- 4 Power key
- 5 Main unit
- 6 NFC™ detection area
- 7 Cover for Micro USB port
- 8 Wristband

Charging

Before using your SmartWatch 3 for the first time, you need to charge it for approximately 30 minutes. Sony chargers and USB cables are recommended.

To charge your SmartWatch 3



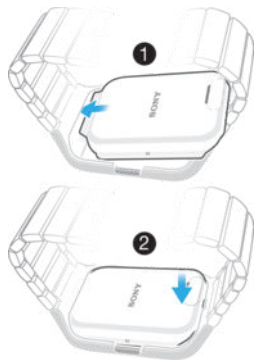
- 1 Plug one end of the USB cable into the Micro USB port of your SmartWatch 3.
- 2 Plug the other end of the cable into the charger or into the USB port of a computer.
- 3 Make sure the charger or computer is connected to an active power source.

To view the battery level

- Swipe downwards from the top of the home screen.

Attaching or detaching the wrist band

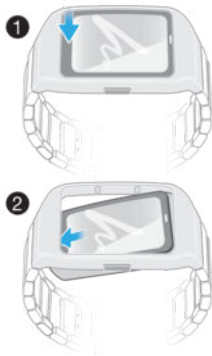
To attach the SmartWatch 3 to the wrist band



- ! Make sure that you don't apply strong force to the frame of the wrist band, as this may cause damage.

- 1 Slide the top of the SmartWatch 3 into the frame.
- 2 Push on the bottom of the SmartWatch 3 to attach it to the wrist band.

To detach the SmartWatch 3 from the wrist band




- 1 Gently push the bottom of the SmartWatch 3 downwards while holding the frame firmly.
- 2 The SmartWatch 3 pops out of the frame.

Turning on and off

To turn on your SmartWatch 3

- Press and hold down the power key until the SmartWatch 3 vibrates.

To turn off your SmartWatch 3

- 1 From the home screen, swipe once from right to left.
- 2 Find and tap **Settings** > **Power off**, then tap .

Setting up your SmartWatch 3

For your SmartWatch 3 accessory to work properly, you must first install the latest version of the Android Wear application on your Android™ phone or tablet and then pair and connect the phone or tablet with your accessory. There are two ways to perform this setup. You can use NFC, which automatically links you to a download page for Android Wear on Google Play™. Alternatively, if your phone or tablet doesn't support NFC, you can use the manual setup option. Remember that you can only pair the SmartWatch 3 with one phone or tablet at a time.

To set up your SmartWatch 3 using NFC

- 1 Make sure that your Android™ phone or tablet is connected to a Wi-Fi® network and that it maintains a Wi-Fi® connection throughout the setup procedure.
 - 2 **Phone or tablet:** Make sure that the NFC function is turned on and that the screen is active and unlocked.
 - 3 Place your phone or tablet over the SmartWatch 3 so that the NFC detection area of each device touches the other. A Google Play™ download page for Android Wear opens on the phone or tablet.
 - 4 **Phone or tablet:** Tap the relevant text or icons on the screen to download and install Android Wear.
 - 5 **Phone or tablet:** Once Android Wear is installed, open the Android Wear application, then follow the on-screen instructions.
 - 6 **Phone or tablet:** If Bluetooth® is not turned on, tap **Turn on Bluetooth** when prompted.
 - 7 **Phone or tablet:** From the list of available devices, select the SmartWatch 3. A pairing code now appears on both the SmartWatch 3 and your phone or tablet.
 - 8 Confirm on your phone or tablet that the same code is displayed on both devices. The SmartWatch 3 now checks for updates, installs any required software and restarts automatically, if necessary.
 - 9 **Phone or tablet:** Follow the on-screen instructions to complete the setup.
 - 10 After setup, the SmartWatch 3 prompts you to turn on some features, such as Google Now and Location services, to add more functionality and improve the user experience. If desired, follow the relevant instructions.
- ! The first time you pair and connect the SmartWatch 3 with a new phone or tablet, the procedure can take several minutes.
- ! If your SmartWatch 3 has already been paired with another phone or tablet, you have to reset your SmartWatch 3 before pairing it with a new phone or tablet. For more information about resetting, see *To perform a factory data reset* on page 17 .

To set up your SmartWatch 3 manually

- 1 Make sure that your Android™ phone or tablet is connected to a Wi-Fi® network and that it maintains a Wi-Fi® connection throughout the setup procedure.
 - 2 Turn on your SmartWatch 3.
 - 3 **Phone or tablet:** Search for the Android Wear application on Google Play™, then download and install the application.
 - 4 **Phone or tablet:** Once Android Wear is installed, open the Android Wear application, then follow the on-screen instructions.
 - 5 **Phone or tablet:** If Bluetooth® is not turned on, tap **Turn on Bluetooth** when prompted.
 - 6 **Phone or tablet:** From the list of available devices, select the SmartWatch 3. A pairing code now appears on both the SmartWatch 3 and your phone or tablet.
 - 7 Confirm on your phone or tablet that the same code is displayed on both devices. The SmartWatch 3 now checks for updates, installs any required software and restarts automatically, if necessary.
 - 8 **Phone or tablet:** Follow the on-screen instructions to complete the setup.
 - 9 After setup, the SmartWatch 3 prompts you to turn on some features, such as Google Now and Location services, to add more functionality and improve the user experience. If desired, follow the relevant instructions.
- ! The first time you pair and connect the SmartWatch 3 with a new phone or tablet, the procedure can take several minutes.
- ! If your SmartWatch 3 has already been paired with another phone or tablet, you have to reset your SmartWatch 3 before pairing it with a new phone or tablet. For more information about resetting, see *To perform a factory data reset* on page 17 .

Connecting to Wi-Fi®

Your SmartWatch 3 supports Wi-Fi® and can automatically connect to saved Wi-Fi® networks when it loses a Bluetooth® connection with your Android™ phone or tablet. When your SmartWatch 3 is connected to a Wi-Fi® network, it can automatically stay synced with your phone or tablet as long as the phone or tablet is also connected to a Wi-Fi® network. So you can get notifications and use voice search on your SmartWatch 3 throughout your home or workplace when you leave your phone or tablet in a different room.

- 💡 You must first install the latest version of the Android Wear application on your Android™ phone or tablet.

To turn Wi-Fi® on or off


- 1 Make sure that the home screen is active on your SmartWatch 3.
 - 2 Swipe once from right to left.
 - 3 Tap **Settings**.
 - 4 Find and tap **Wi-Fi Settings**.
 - 5 If **Wi-Fi Off** is displayed, tap **Wi-Fi Off** to turn on Wi-Fi®. If **Wi-Fi Automatic** is displayed, tap **Wi-Fi Automatic** to turn off Wi-Fi®.
- ! If Wi-Fi® is activated on your SmartWatch 3, your SmartWatch 3 automatically connects to any known, available network when your SmartWatch 3 does not have a Bluetooth® connection to your Android™ phone or tablet.

- 💡 Turning off Wi-Fi® can extend your battery life.

To connect to a preferred Wi-Fi® network

- 1 Make sure that the home screen is active on your SmartWatch 3.
 - 2 Swipe once from right to left.
 - 3 Tap **Settings**.
 - 4 Find and tap **Wi-Fi Settings**.
 - 5 Make sure that Wi-Fi® is set to **Wi-Fi Automatic**.
 - 6 Scroll down through the available networks, then select the network that you want to connect to.
- ! Your SmartWatch 3 cannot connect to Wi-Fi® networks that take you to a login page before you can connect, for example, Wi-Fi® networks at places like hotels or cafés.
 - 💡 Your SmartWatch 3 automatically chooses the best available Wi-Fi® network.

To forget a known network


- 1 Make sure that the home screen is active on your SmartWatch 3.
- 2 Swipe once from right to left.
- 3 Tap **Settings**.
- 4 Find and tap **Wi-Fi Settings**.
- 5 Make sure that Wi-Fi® is turned on.
- 6 Find and tap **Saved networks**.
- 7 Select the network that you want to forget.
- 8 Tap  to confirm.

Disabling Wi-Fi® to extend battery life

If the Wi-Fi® function is using a lot of battery power, it may get turned off automatically and the message "Wi-Fi® disabled to extend battery life" appears. How fast your battery drains depends on how much you use your SmartWatch 3 while it's connected to Wi-Fi®. You can disable the message via the notification settings.

- 💡 The Wi-Fi® function switches on again automatically when your SmartWatch 3 is recharged.

To turn off notifications

- 1 Open the Android Wear application on your Android™ phone or tablet, then tap .
- 2 Find and tap **Block app notification**.
- 3 Tap **+**.
- 4 Scroll down to find the app that you want to block, then tap it.

! You can also block notifications directly on your SmartWatch 3.

💡 By turning off unnecessary notifications, you save battery power when using Wi-Fi®.


To change how much battery Wi-Fi® can use before it's turned off

- 1 Make sure that the home screen is active on your SmartWatch 3.
- 2 Swipe once from right to left.
- 3 Tap **Settings**.
- 4 Find and tap **Wi-Fi Settings > Advanced > Power save after....**
- 5 Scroll down and select an option.

Cloud sync

The Android Wear cloud sync service lets you share data between your SmartWatch 3 and your Android™ phone or tablet over the Internet. The data is saved on the Android Wear cloud sync server. Before you can use Wi-Fi® on your SmartWatch 3, you need to turn on the cloud sync feature in the Android Wear application on your phone or tablet.

To turn on Cloud sync

- 1 Open the Android Wear application on your Android™ phone or tablet, then tap .
- 2 Find and tap **Cloud sync**.
- 3 Drag the slider to the **On** position.

Learning the basics

Using the touchscreen

Swiping



Swipe up	<ul style="list-style-type: none">• View more cards, if available.• Browse down through options in a list.
Swipe down	<ul style="list-style-type: none">• View previous cards, if not dismissed.• Browse up through options in a list.
Swipe left	<ul style="list-style-type: none">• See more details and actions, if available.
Swipe right	<ul style="list-style-type: none">• Dismiss a card or close a menu.

Tapping



- Open or select an item.

Dimming and waking up the screen

When your SmartWatch 3 is on and left idle for a period of time, the screen dims automatically. You can also dim the screen manually and wake it up at any time.

To wake up the screen

Perform one of the following actions:

- When the SmartWatch 3 is on your wrist, turn it towards you.
- Tap the screen or briefly press the power key.

To dim the screen manually

Perform one of the following actions:

- Place the palm of your hand over the screen until it vibrates.
- Briefly press the power key.

- Drop the wrist on which you are wearing the SmartWatch 3 to your side.
- ! To dim the screen by dropping your wrist, you must first activate the wrist gesture function. See *To activate the wrist gesture function*.

Home screen

The home screen can show the time and date and the status of your SmartWatch 3. From the home screen, you can view cards or take voice actions.

When the screen is dimmed, you can still see the time and date and view the status of your SmartWatch 3 as long as you choose a suitable watch face.

Wrist gestures

You can use wrist gestures to scroll cards instead of swiping upwards or downwards on the screen of your SmartWatch 3.

Flick wrist out	Scroll down.
Flick wrist in	Scroll up.
Push arm down	Acts like a tap, or cancels a voice action.
Pivot up	Go back one menu, or cancel a voice action.
Shake wrist	Go to home screen, or cancel a voice action.

- ! Before you can use wrist gestures, you must activate this function. See *To activate the wrist gesture function* on page 11 .

To activate the wrist gesture function

- 1 Make sure that the home screen is active on your SmartWatch 3.
- 2 Swipe once from right to left.
- 3 Tap **Settings**.
- 4 Find and tap **Gestures**, then tap **Wrist gestures**.

- ! The drain on the battery increases slightly when the wrist gesture function is activated.

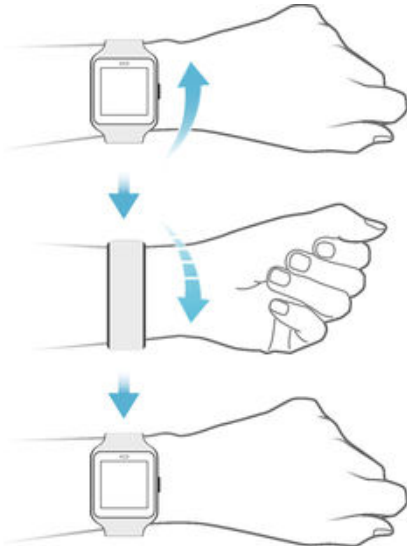
To access the tutorial menu

- 1 Make sure that the home screen is active on your SmartWatch 3.
- 2 Swipe once from right to left.
- 3 Tap **Settings**.
- 4 Find and tap **Gestures**, then tap **Launch tutorial**.

To cancel a voice action

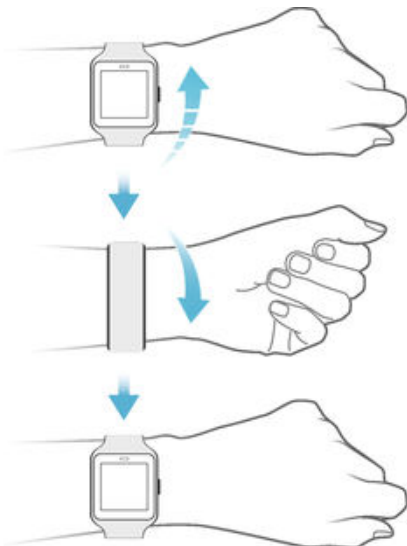
- Use the pivot up or push down gesture to cancel a voice action.

To scroll up using wrist gestures



- 1 Make sure that the **Wrist gestures** function is activated.
- 2 Activate the home screen on your SmartWatch 3.
- 3 Flick your wrist away from you in the upwards direction, then turn it slowly back towards you.

To scroll down using wrist gestures



- 1 Make sure that the **Wrist gestures** function is activated.
- 2 Activate the home screen on your SmartWatch 3.
- 3 Slowly turn your wrist away from you in the upwards direction, then quickly flick it back towards you.

Cards

Much of the information that you need appears on the screen of your SmartWatch 3 as "cards". Depending on the information shown, a card can be compared to a notification or reminder, an update, a pop-up message or a thumbnail.

You can view cards that show the weather of the day, your daily step count, incoming text messages and the answer to a simple question that you want to know.

You can swipe through cards, that is, you can swipe from one screen to another to view more details and take actions. You can dismiss cards when you are finished viewing them.

To view cards

- 1 Swipe upwards on the screen or turn your wrist away from you.
 - 2 To see all the text on a card, tap the card.
- 💡 To view a tutorial about how to handle cards, go to the main application screen on your phone or tablet, then find and tap **Android Wear** > **Tutorial**. The tutorial is displayed on both your SmartWatch 3 and your phone or tablet.

To view details of a card and take actions

- 1 To view details of a card, swipe from right to left on the card.
- 2 To take an action, tap one of the available actions on a card. For example, tap **Reply** to reply to a text message.

To dismiss a card

- Swipe from left to right on the card.
- ! When you dismiss a card, the related notification also gets dismissed on your phone or tablet. The content itself, however, does not get deleted.

To restore a dismissed card

- 1 After the card is dismissed, swipe downwards from the top of the screen. If the dismissed card is the last card available, swipe upwards from the bottom of the screen.
 - 2 Tap ↶.
- ! After you dismiss a card, you only have a several seconds to restore it before it gets deleted.

Controlling notification cards on your SmartWatch 3

If your phone or tablet runs Android™ version 5.0, you can adjust the interruption settings to select which types of notification cards are allowed on your SmartWatch 3.

If your phone or tablet runs Android™ version 4.3 or 4.4, you can mute or unmute your SmartWatch 3 to control whether notification cards appear on your SmartWatch 3.

To adjust the interruption settings for your SmartWatch 3

- 1 Make sure that your phone or tablet is running Android™ version 5.0.
- 2 Swipe downwards the whole length of the screen of your SmartWatch 3.
- 3 Select an option.

To mute or unmute your SmartWatch 3

- 1 Make sure that your phone or tablet is running Android™ version 4.3 or 4.4.
 - 2 Swipe downwards the whole length of the screen of your SmartWatch 3.
 - 3 Tap 🔔 to mute or 🔕 to unmute your SmartWatch 3.
- ! After you mute your SmartWatch 3, notification cards stop appearing on the accessory.

Google Now

Google Now, which is part of the Google Search application, recognises repeated actions that you perform on your phone or tablet and displays more relevant information to you in the form of "cards".

Google Now cards

A range of Google Now cards can work with Android Wear and appear on your SmartWatch 3. They cover the following categories:

- Stock news
- Weather
- Reminders
- Sports news

- Traffic
- Flights and reservations
- Boarding passes
- Shipping confirmation for packages
- Public transit info on nearby trains and buses
- Friends' birthdays
- Public alerts
- Reminders to leave on time for upcoming appointments
- Hotel and restaurant reservations

To customise Google Now on your phone or tablet






- 1 From the application screen on your phone or tablet, find and tap **Google**.
- 2 Drag the left edge of the screen to the right, then tap **Customise**.
- 3 Select an option and enter the relevant information.

Viewing status icons







Your SmartWatch 3 displays status icons on the home screen. It shows, for example, the connection status of your accessory and the battery charge status.

Status icons

If your phone or tablet runs Android™ version 4.3 or 4.4, the following status icons may appear on the home screen of your SmartWatch 3:

-  Your SmartWatch 3 is disconnected from your phone or tablet
-  Theatre mode is activated
-  Your SmartWatch 3 is muted
-  The battery is charging
-  Airplane mode is activated

If your phone or tablet runs Android™ version 5.0, the following status icons may appear on the home screen of your SmartWatch 3:

-  Your SmartWatch 3 is disconnected from your phone or tablet
-  Theatre mode is activated
-  Silent mode is activated
-  Only allow priority interruptions
-  The battery is charging
-  Airplane mode is activated

Basic settings

Accessing settings

You can view and change settings directly on your SmartWatch 3 via the Settings menu. You can access the Settings menu using the power key, voice commands or the home screen.

To open the Settings menu using the power key


- 1 Make sure that the screen is active on your SmartWatch 3.
- 2 Press and hold down the power key until the app menu appears.
- 3 Find and tap **Settings**.

To open the Settings menu using voice commands

- 1 Make sure that the screen is active on your SmartWatch 3.
- 2 Say "OK Google". If the command is recognised, the "Speak now" screen opens.
- 3 Say "Settings".

To open the Settings menu by tapping the screen

- 1 Make sure that the screen is active on your SmartWatch 3.
- 2 Swipe once from right to left.
- 3 Find and tap **Settings**.

- 💡 To open the Settings menu, you can also swipe downwards from the top of the home screen and then swipe from right to left twice and tap .

Screen settings

You can adjust the screen brightness and select to always display a dimmed watch face when the screen is idle by activating the Always-on screen function. You can also change the type of watch face that displays on your home screen.

To adjust the screen brightness

- 1 From the Settings menu on your SmartWatch 3, find and tap **Adjust brightness**.
- 2 Scroll up or down to select the desired brightness level.

To turn the Always-on screen function on or off

- From the Settings menu on your SmartWatch 3, find and tap **Always-on screen** accordingly to turn the function on or off.

To change the watch face directly on the SmartWatch 3

- 1 From the Settings menu on your SmartWatch 3, find and tap **Change watch face**.
- 2 Swipe left or right to view the watch faces available, then tap the watch face that you want to use.


- 💡 You can also touch and hold the home screen to change the watch face.

To change the watch face via the phone or tablet

- 1 On your phone or tablet, open the Android Wear application.
- 2 Under **Watch faces**, select an option, or tap **More** to view more watch faces and then select an option.


- 💡 To access more watch face options using third-party apps on Google Play™, scroll down to the bottom of the screen and tap **Get more watch faces**.

To activate the automatic screen lock


- 1 Make sure that the home screen is active on your SmartWatch 3.
- 2 Swipe once from right to left.
- 3 Tap **Settings**.
- 4 Find and tap **Screen lock**.
- 5 Tap  to confirm.
- 6 To set your unlock pattern, draw a pattern.
- 7 Redraw the pattern to confirm it.

! The screen locks automatically when you're not wearing your SmartWatch 3. It also locks when your SmartWatch 3 loses its Bluetooth® connection to your Android™ phone or tablet.

To turn off the automatic screen lock

- 1 Make sure that the home screen is active on your SmartWatch 3.
- 2 Swipe once from right to left.
- 3 Tap **Settings**.
- 4 Find and tap **Screen lock**.
- 5 Tap  to confirm.
- 6 Draw the saved screen unlock pattern.

To lock the screen manually

- 1 Make sure that the home screen and the automatic screen lock are activated on your SmartWatch 3.
- 2 Swipe once from right to left.
- 3 Tap **Settings**.
- 4 Find and tap **Lock screen now**.
- 5 Tap  to confirm.

💡 You can immediately lock your SmartWatch 3 screen by manually activating this function.

Airplane mode

In Airplane mode, the Bluetooth® and Wi-Fi® functions of your SmartWatch 3 are turned off and your SmartWatch 3 is disconnected from your phone or tablet. However, you can still use some basic features. For example, you can set a timer or an alarm.

! In Airplane mode, you must tap the screen to navigate your SmartWatch 3 and perform tasks. Voice commands are not available.


To turn on/off Aeroplane mode

- From the Settings menu on your SmartWatch 3, find and tap **Aeroplane mode**.

Theatre mode

Theatre mode setting turns off the display of your SmartWatch 3 and prevents notifications from appearing. This function is useful if you are in a place where you don't want to be disturbed or disturb others, for example, a theatre or a library.

To turn Theatre mode on or off

- 1 Swipe downwards the whole length of the screen.
- 2 Swipe from right to left until **Theatre mode** is displayed on the screen.
- 3 To turn on **Theatre mode**, tap . To turn off **Theatre mode**, press the power button.

! In **Theatre mode**, you can only activate the screen of your SmartWatch 3 by pressing the power key.

💡 You can also quickly press the power key twice to turn **Theatre mode** on or off.

Restarting and resetting

If your SmartWatch 3 stops responding, it is recommended to restart the device using the power key. When this restart method does not work, you can force the SmartWatch 3 to shut down. No settings or personal data get deleted during a restart or shutdown procedure, whether it's forced or not.

You can also reset your SmartWatch 3 to its factory default settings. This procedure deletes all personal data on your SmartWatch 3 and is sometimes necessary in situations where your SmartWatch 3 stops functioning properly.


To restart your SmartWatch 3 using the power key

- Press and hold down the power key until your SmartWatch 3 vibrates once and restarts.

To force your SmartWatch 3 to shut down

- Press and hold down the power key until your SmartWatch 3 vibrates three times in quick succession and turns off.
- ! Ignore any other single vibrations or restart attempts as you wait for the three successive vibrations while keeping the power key pressed.

To perform a factory data reset

- 1 From the Settings menu of your SmartWatch 3, find and tap **Unpair with phone**.
- 2 To confirm, tap .

Using your SmartWatch 3

Staying organised with your SmartWatch 3

You can speak to your SmartWatch 3 to set reminders, take notes, check your schedule, reply to a text message and perform other actions. You can also tap the screen to act on simple tasks that are listed in the app menu and the task menu.

- ! Most of the features described above work if your language is set to English, French, German, Italian, Japanese, Korean, Russian, Spanish, or Brazilian Portuguese. Note, however, that some voice actions may not be available in all languages and countries.

To access the app menu

- 1 Make sure that the home screen is active on your SmartWatch 3.
- 2 Swipe once from right to left. All available apps appear in a list.

To access the task menu

- 1 Make sure that the home screen is active on your SmartWatch 3.
- 2 Say "OK Google". If the command is recognised, the "Speak now" screen opens.
- 3 To access the task menu, swipe upwards. All available tasks appear in a list.

Applications that work with your SmartWatch 3

The list below shows some applications which, when installed on your Android™ phone or tablet, are compatible for use with your SmartWatch 3. To access a full range of downloadable apps that support Android Wear, go to Google Play™. It's recommended to check on Google Play™ regularly as new apps are added all the time.

- Messaging
- Email
- Calendar
- The Music application from Sony and other standard Android™ music players
- Lifelog
- Google applications such as Google Keep, Google Maps and Gmail

- ! You might need to update these applications to the latest version in order to achieve optimal compatibility with Android Wear.

Contacts

The contact list on your SmartWatch 3 shows all contacts that you have communicated with recently. You can use your SmartWatch 3 to send a text or email message or make a call directly from the contact list.

To view your contact list

- 1 Make sure that the home screen is active on your SmartWatch 3.
- 2 To view your contact list, swipe from right to left twice.

To communicate with contacts directly from the contact list

- 1 Make sure that the home screen is active on your SmartWatch 3.
- 2 Swipe from right to left twice.
- 3 Find and tap the name of the contact with whom you want to communicate.
- 4 Select an option, then follow the on-screen instructions.

Handling text messages

When a text message comes in on your phone or tablet, you can immediately read the message on your SmartWatch 3 in the form of a card. You can also use your

SmartWatch 3 to send text messages to contacts that are saved on your phone or tablet.



To send a text message

- 1 Make sure that the home screen is active on your SmartWatch 3.
- 2 Say "OK Google". If the command is recognised, the "Speak now" screen opens.
- 3 Say "Send a text" and the name of a contact that is saved to your phone or tablet, then say the text that you want to send.
- 4 Alternatively, you can say something like "Text Jack I'm ready" or "Send Jane a message that I'm back". In both cases, the message gets sent automatically.

To reply to a text message

- 1 Select the card that represents the text message that you want to reply to.
- 2 Swipe from right to left until you see **Reply**, then tap **Reply**.
- 3 Swipe upwards and select a predefined message, or enter a spoken reply by saying your message aloud. Once you're finished, the text message is sent automatically.

To reply to a text message with emoji

- 1 Select the card that represents the text message that you want to reply to.
- 2 Swipe from right to left until you see **Reply**, then tap **Reply**.
- 3 Swipe upwards and select **Draw emoji**.
- 4 Draw an emoji, for example, a smiley face or a thumbs-up sign. Your SmartWatch 3 then searches for an emoji that best matches your drawing. If no match is found, you are shown a selection to choose from. Select an emoji or swipe from left to right and try drawing another one yourself.
- 5 If desired, add more emoji.
- 6 To delete an emoji, tap to select all the emoji characters that you have drawn, then tap again to select the particular one that you want to delete and then tap .
- 7 To send the message, tap .

 You can also choose emoji by tapping  on the emoji drawing screen.

Handling emails

When an email message comes in on your Android™ phone or tablet, you can read and reply to it using your SmartWatch 3. Each email is represented by a corresponding card on the accessory. You can also speak into your SmartWatch 3 to send email messages to saved contacts.

To send an email message

- 1 Make sure that the home screen is active on your SmartWatch 3.
- 2 Say "OK Google". If the command is recognised, the "Speak now" screen opens.
- 3 Say "Email" and the name of a contact that is saved to your phone or tablet, then say the text that you want to send.
- 4 Alternatively, you can say something like "Email Jack that I will be there tomorrow". In both cases, the message gets sent automatically.

To reply to an email message

- 1 Select the card that represents the email message that you want to reply to.
- 2 Swipe from right to left until you see **Reply**, then tap **Reply**.
- 3 Swipe upwards and select a predefined message, or enter a spoken reply by saying your message aloud. Once you're finished, the message gets sent automatically.

Handling incoming calls

When a call comes in on your Android™ phone or tablet, you can see who is calling on the screen of your SmartWatch 3. You can then use your SmartWatch 3 to accept the call and speak, for example, into a Bluetooth® headset to communicate with the caller. Or you can decline the call on your SmartWatch 3. You can also decide to decline incoming calls with a predefined text message.

To answer an incoming call

- 1 To accept the incoming call, swipe from right to left on the screen of your SmartWatch 3.
- 2 Use a phone, tablet or Bluetooth® headset to speak with the caller.

To decline an incoming call

- Swipe from left to right on the screen of your SmartWatch 3.

To reject an incoming call with a predefined message

- Swipe upwards from the bottom of the screen of your SmartWatch 3, then select a message.

Navigation

You can speak to your SmartWatch 3 to get turn-by-turn directions to a given destination. You can also find nearby places or businesses and get relevant information about them.

To navigate using your SmartWatch 3

- 1 Make sure that the home screen is active on your SmartWatch 3.
 - 2 Say "OK Google". If the command is recognised, the "Speak now" screen opens.
 - 3 Say "Navigate" and then say your destination. Alternatively, say something like "Navigate to the nearest hotel". If your command is registered properly, the route appears on your SmartWatch 3.
- On the navigation screen, swipe from right to left to view route information such as time and distance to the location.

To find a place or business



- 1 Make sure that the home screen is active on your SmartWatch 3.
- 2 Say "OK Google". If the command is recognised, the "Speak now" screen opens.
- 3 Say something like "Find the Eiffel Tower", "Where is the closest supermarket?" or "How far is Starbucks from my home?". If your request is recognised, the relevant information appears on the SmartWatch 3.

Viewing your outdoor activities

When your SmartWatch 3 is disconnected from your phone or tablet, it can still record data about your activities, for example, the location, speed and distance walked or run. You can view statistics generated from this data on your phone or tablet at a later time when the SmartWatch 3 is connected. For example, you can view your journeys on a map.

- ! You must install a compatible application, such as Lifelog or My Tracks, for the functionality described above to work.

To view your journeys in the Lifelog application

- 1 Make sure that you have installed the Lifelog application on your Android™ phone or tablet and make sure that you are signed into the application.
- 2 From the main application screen on the Android™ phone or tablet, find and tap **Lifelog**.
- 3 Tap . Details of your current journey appear on the phone or tablet.
- 4 To view your previous journeys, tap , then select the desired date.

Music

When you are listening to music on your Android™ phone or tablet (using a music player application such as the Music application from Sony, for example), a card representing the song appears on your SmartWatch 3. This music card gives basic details about the song and allows you to control the playback. For example, you can pause, play and skip songs conveniently from your SmartWatch 3.

You can also download music to your SmartWatch 3 from your phone or tablet and listen to the music using a connected Bluetooth® headset. You can do this even when the SmartWatch 3 is disconnected from your phone or tablet, for example, when you are out running and have left your phone or tablet at home.

Downloading music to the SmartWatch 3

You can download whole playlists of songs that are saved on your phone or tablet to the SmartWatch 3 using the Music application. You can also do the same thing using the Google Play Music application.

To download a playlist using the Music application

- 1 Make sure the battery level of your SmartWatch 3 is 50% or higher, or make sure that a charger is connected to your SmartWatch 3.
 - 2 From the main application screen on your Android™ phone or tablet, find and tap **Music**.
 - 3 To open the Music home screen menu, drag the left edge of the screen to the right.
 - 4 Tap **Playlists**, then select the playlist that you want to download to your SmartWatch 3.
 - 5 Drag the slider beside **Sync to SmartWatch 3** to turn on the download playlist function. A card indicating the download progress appears on your SmartWatch 3.
- ! You may need to update the Music application to the latest version to download playlists to your SmartWatch 3.
 - ! Playlists downloaded to your SmartWatch 3 get deleted when you turn off the **Sync to SmartWatch 3** function in the Music application.

To download music files using the Google Play Music application

- 1 Make sure the battery level of your SmartWatch 3 is 50% or higher, or make sure that a charger is connected to your SmartWatch 3.
 - 2 From the main application screen on your Android™ phone or tablet, find and tap **Play Music**.
 - 3 Drag the left edge of the screen to the right, then tap **Settings**.
 - 4 Mark the **Download to Android Wear** checkbox. The SmartWatch 3 starts to download all music files that are saved on your phone or tablet. A card indicating the download progress appears on your SmartWatch 3.
- ! If your SmartWatch 3 does not have enough storage space for all music files, only recently played albums and playlists are downloaded to your SmartWatch 3.
 - ! All music files currently saved on your SmartWatch 3 get deleted when you unmark the **Download to Android Wear** checkbox.

Listening to music saved on your SmartWatch 3

Before you can listen to music saved on your SmartWatch 3, you must first pair the SmartWatch 3 with a Bluetooth® headset. Once this pairing is established, you can then use either the Music application or the Google Play Music application to listen to your music.

To pair the SmartWatch 3 with a Bluetooth® headset

- 1 Make sure that the headset you want to pair with has the Bluetooth® function activated and is visible to other Bluetooth® devices.
- 2 From the Settings menu of your SmartWatch 3, tap **Bluetooth devices**. All available Bluetooth® devices appear in a list.
- 3 Select the Bluetooth® headset that you want to pair with.

To use the Music app to listen to music saved on your SmartWatch 3

- 1 Make sure that your SmartWatch 3 is connected with a Bluetooth® headset.
 - 2 Make sure that the home screen is active on your SmartWatch 3.
 - 3 Swipe once from right to left.
 - 4 Find and tap **Music**. The Music application card appears.
 - 5 To listen to music saved on your SmartWatch 3, tap the card.
- ! You cannot use voice commands if the SmartWatch 3 is disconnected from your phone or tablet.

To use the Google Play Music app to listen to music saved on your SmartWatch 3

- 1 Make sure that your SmartWatch 3 is connected with a Bluetooth® headset.
 - 2 Make sure that the home screen is active on your SmartWatch 3.
 - 3 Swipe once from right to left.
 - 4 Find and tap **Play Music > Play on Wear**. The Google Play Music application card appears.
 - 5 To listen to music saved on your SmartWatch 3, swipe upwards and select a playlist or album.
- ! You cannot use voice commands if the SmartWatch 3 is disconnected from your phone or tablet.

Finding your phone or tablet

In situations where you cannot locate your phone or tablet, you can use your SmartWatch 3 to make the phone or tablet ring. For this function to work, your SmartWatch 3 must be connected to the phone or tablet using Bluetooth®. It works even when your phone or tablet is set to mute or vibrate only.

- ! Bluetooth® connections work better within a range of 10 metres (33 feet), with no solid objects in between.

To find your phone or tablet

- 1 Make sure that the home screen is active on your SmartWatch 3.
- 2 Swipe once from right to left.
- 3 Find and tap **Find my phone**. If your phone or tablet is detected, it starts to ring repeatedly. If not, try to move around to make sure that your SmartWatch 3 is connected via Bluetooth® with the phone or tablet.
- 4 To cancel the ringing, tap **✕**.

Reminders

You can speak to your SmartWatch 3 to set reminders for events at a certain location or time.

To set a reminder

- 1 Make sure that the home screen is active on your SmartWatch 3.
- 2 Say "OK Google". If the command is recognised, the "Speak now" screen opens.
- 3 Say "Remind me" and then say what you want to be reminded about. For example, you could say "Remind me to run at 7pm" or "Remind me to call John when I get home". The reminder is then saved to Google Now and a card appears on your SmartWatch 3 when the reminder becomes active.

Notes

You can speak to your SmartWatch 3 to create notes or to view existing notes saved to Google Keep or other compatible applications.

To create a note

- 1 Make sure that the home screen is active on your SmartWatch 3.
- 2 Say "OK Google". If the command is recognised, the "Speak now" screen opens.
- 3 Say "Take a note" and then say what you want to save as a note. For example, you could say "Take a note, try the new restaurant on Main Street". If recognised, the note is saved to Google Keep.

To view a note

- 1 Make sure that the home screen is active on your SmartWatch 3.
- 2 Say "OK Google". If the command is recognised, the "Speak now" screen opens.
- 3 Say "Start Keep". The Google Keep application opens on your SmartWatch 3.
- 4 To browse to the note that you want to select for viewing, swipe upwards or downwards.
- 5 To open a note and view its details, tap the note.

Agenda

Details of upcoming events that are saved in the main Calendar application on your phone or tablet appear automatically on your SmartWatch 3 as cards. You can also speak to your SmartWatch 3 to check your schedule, that is, to view your agenda.

To view your agenda

- 1 Make sure that the home screen is active on your SmartWatch 3.
- 2 Say "OK Google". If the command is recognised, the "Speak now" screen opens.
- 3 Say "Agenda". The calendar card view opens. To view a specific event, say your special requirement, for example, "When's my next meeting?".

Getting quick answers

You can use your SmartWatch 3 to get quick answers to simple questions. For example, you can speak to your SmartWatch 3 to get sports scores, look up the definition of a word and ask questions about common facts, for example, the capital city of a particular country or the highest mountain in South America.

To get a quick answer

- 1 Make sure that the home screen is active on your SmartWatch 3.
- 2 Say "OK Google". If the command is recognised, the "Speak now" screen opens.
- 3 Ask anything that you want to know, for example, "How do you say 'hello' in Spanish?" or "Where was Albert Einstein born?". If your question is recognised, the answer appears on your SmartWatch 3.

How to phrase your questions

Things you want to know	Examples of how to ask
Sports scores and schedules	When is the next Liverpool game? How did Real Madrid do?
Weather	What is the weather in New York tomorrow?
Time in another time zone	What time is it in London?
Translations for words and phrases	How do you say "hello" in Spanish?
Calorie counts in common foods	How many calories are in a potato?
Definition of a word	What does onomatopoeia mean?
Stocks	What is Sony's stock price?
Conversion of currency, volume, weight, and more	What is 16 ounces in pounds? Convert 100 euros to US dollars How many kilometres are 50 miles?
Maths and calculations	What is the square root of 2209?
Upcoming events	When is sunset? When is Midsummer Festival in Scandinavia?
Random facts	How tall is the Eiffel Tower? Where was Albert Einstein born?

Counting steps

With the Fit application from Google™ you can view your daily step count and the total amount of steps that you have taken over the last seven days on the display of your SmartWatch 3.

To view your step count

- 1 Make sure that the home screen is active on your SmartWatch 3.
- 2 Say "OK Google". If the command is recognised, the "Speak now" screen opens.
- 3 Say "Show me my steps" or "Start Fit". The Step count view opens.

Setting an alarm

You can speak to your SmartWatch 3 to set an alarm. An alarm saved on the SmartWatch 3 works independently from alarms set up on your phone or tablet. When an alarm goes off, your SmartWatch 3 vibrates and an alarm card is displayed on the home screen.

To set an alarm

- 1 Make sure that the home screen is active on your SmartWatch 3.
- 2 Say "OK Google". If the command is recognised, the "Speak now" screen opens.
- 3 Say "Set an alarm for" and add the exact time. For example, say "Set an alarm for 8am".

To turn off an alarm when it sounds

- Drag  to the right.

To snooze an alarm when it sounds

- Drag **zz'** to the left.

To show all alarms

- 1 Make sure that the home screen is active on your SmartWatch 3.
- 2 Say "OK Google". If the command is recognised, the "Speak now" screen opens.
- 3 Say "Show alarms".

Setting a timer

Use your SmartWatch 3 as a countdown timer. You can speak to your SmartWatch 3 to set a timer.

To set a timer

- 1 Make sure that the home screen is active on your SmartWatch 3.
- 2 Say "OK Google". If the command is recognised, the "Speak now" screen opens.
- 3 Say "Set a timer for" and then say the amount of minutes or hours. For example, say "Set a timer for 15 minutes".

Using the stopwatch function

You can use your SmartWatch 3 as a standalone stopwatch.

To use the stopwatch

- 1 Make sure that the home screen is active on your SmartWatch 3.
- 2 Say "OK Google". If the command is recognised, the "Speak now" screen opens.
- 3 To open the stopwatch application, say "Start stopwatch".
- 4 To start the stopwatch, tap ►.
- 5 To pause the stopwatch, tap ■■.

Checking flight and hotel reservations

When incoming notifications about flight reservations or hotel bookings are received via Gmail or via the Inbox by Gmail application on your Android™ phone or tablet, they automatically appear as cards on your SmartWatch 3.

Getting traffic information

You can view cards showing traffic information, which let you know how long it will take to get home or to work. To use this function, you must enter your home and work address in Google Now.

Tracking packages

When incoming notifications about the status of parcels or packages for you are received via the Gmail application on your Android™ phone or tablet, they automatically appear as cards on your SmartWatch 3.

Using your SmartWatch 3 as a standalone device

When your SmartWatch 3 is disconnected from your phone or tablet, you can still use some basic features. Since voice commands no longer work after disconnection, you must tap the screen to navigate your SmartWatch 3 and confirm actions. In standalone mode, you can still do the following:

- View the time and date.
- Set an alarm.

- Use the stopwatch.
 - Use the timer.
 - View your agenda for the current day.
 - Listen to music saved on your SmartWatch 3 with a connected Bluetooth® headset.
 - Keep a record of your outdoor activities.
 - View your step count.
 - Change the watch face.
 - Turn Airplane mode on or off.
- ! Some of the features described above require the download and installation of the relevant applications, for example, a music player app or a fitness training app.

Android Wear application

Android Wear on your phone or tablet

When the Android Wear application is installed on your phone or tablet, you can customise the settings for your SmartWatch 3.

To open the Android Wear application

- From the main application screen on your Android™ phone or tablet, find and tap **Android Wear**.

Selecting applications for voice actions

You can select the applications that you want to use together with voice commands, that is, you can associate specific applications with specific voice-triggered actions. For example, you can select which map application to use for navigation if you have two map applications installed on your phone or tablet and they both work with Android Wear. If only one application is available for a particular type of voice action, that application gets associated by default with the action.

To associate an application with a voice action

- 1 Open the Android Wear application on your Android™ phone or tablet.
 - 2 Scroll to the card named **Jump into action into watch apps**, then find and tap **MORE ACTIONS** and select an action. If an application is already associated with the voice action, it appears when you tap on the action.
 - 3 If more than one application option appears, select your preferred application.
- 💡 If no application name appears when you tap on a voice action, this voice action is not available. You may need to install a compatible application separately, for example, from the list of suggested applications.

Installing suggested applications

You can browse and install applications that Android Wear suggests for you, for example, Google Keep or some third-party applications that add functionality and allow you to do more with your SmartWatch 3.

To install a suggested application


- 1 Open the Android Wear application on your Android™ phone or tablet, then scroll down and tap **GET APPS**. The Google Play™ application opens and a selection of suggested applications that work with Android Wear is displayed.
 - 2 Select an application that you want to download, then follow the relevant on-screen instructions to install it.
- 💡 You can also search for supported applications directly on Google Play™.

Connecting and reconnecting


You can disconnect your SmartWatch 3 from your phone or tablet at any time and reconnect it at a later time. Once the SmartWatch 3 and your phone or tablet have been paired and connected once, the pairing data is saved on both devices and subsequent reconnection only requires a tap of your finger.

- ! The Bluetooth® function must be turned on for the functionality described here to work.

To disconnect your SmartWatch 3

- Open the Android Wear application on your Android™ phone or tablet, then tap  > **Disconnect SmartWatch 3**.

To reconnect your SmartWatch 3

- Open the Android Wear application on your Android™ phone or tablet, then tap  > **Connect SmartWatch 3**.

Pairing with another wearable device

If you have paired your phone or tablet with the SmartWatch 3 using the Android Wear application, you can use the Android Wear application to pair your phone or tablet with another watch or accessory that is powered by Android Wear.


To pair your phone or tablet with another wearable device

- 1 Turn on the wearable device that you want to pair with.
- 2 **Phone or tablet:** From the main application screen, find and tap **Android Wear > SmartWatch 3 > Pair with a new wearable**.
- 3 **Phone or tablet:** Tap the name of the new wearable device, then follow the on-screen instructions to complete the setup.

Adjusting settings for your SmartWatch 3

You can customise your SmartWatch 3 by adjusting the settings for the accessory in the Android Wear application on your phone or tablet. For example, you can mute specific applications or set whether you want to have calendar event reminders appear as cards on your SmartWatch 3.

To access the Settings menu in the Android Wear application

- 1 Open the Android Wear application on your Android™ phone or tablet, then tap .
- 2 To access the specific settings for each accessory, tap the accessory name under **Device settings**.

Settings overview


Setting name	What you can do
Block app notifications	Tap to stop showing notifications from specific applications on the SmartWatch 3
Always-on screen	Select this option if you want a dimmed watch face to appear on the SmartWatch 3 screen when the screen is idle
Tilt to wake screen	Select this option if you want to wake up the screen by turning it towards you when it is on your wrist
Watch battery	Tap to view the battery status of your SmartWatch 3
Watch storage	Tap to view the storage status of your SmartWatch 3
Card previews	Select whether cards are shown or hidden when the SmartWatch 3 screen is dimmed
Mute phone alerts & calls	Select whether to sound alerts on both connected devices or just on your SmartWatch 3
Calendar settings	Select whether to show calendar event reminders as cards on your SmartWatch 3 and select what type of reminders appear as cards
Resync apps	Tap to resync compatible applications installed on your phone or tablet with your SmartWatch 3
Cloud sync	Sync data between your phone or tablet and your SmartWatch 3 over Wi-Fi®

FORGET WATCH Tap to unpair your SmartWatch 3 from your phone or tablet

Android Wear help

You can get online help about Android Wear on your Android™ phone or tablet.

[To get help about Android Wear](#)

- 1 Open the Android Wear application on your Android™ phone or tablet, tap  > **Help & feedback**.
- 2 Select the relevant help item.

Important information

Using your accessory in wet and dusty conditions

- ! To ensure the water and dust resistance of your accessory, the cover for the Micro USB port must be firmly closed.

Your accessory is water and dust resistant in compliance with the Ingress Protection (IP) ratings IP68, as explained in the table below.

These specific IP ratings mean that your accessory is dust resistant and is protected against the effects of immersion for 30 minutes in fresh (non-saline) water up to 1.5 metres deep.

You can use your accessory:

- in dusty environments, for example, on a windy beach.
- when your fingers are wet.
- in some extreme weather conditions, for example, when it's snowing or raining.
- in fresh (non-saline) water depths of 1.5 metres or less, for example, in a fresh water lake or river.
- in a chlorinated swimming pool.

Even if your accessory is resistant to dust and water, you should avoid exposing it unnecessarily to environments with excessive dust, sand and mud or to moist environments with extreme high or low temperatures. The water resistance ability of the Micro USB port cannot be guaranteed in all environments or conditions.

Never immerse your accessory in salt water or let the Micro USB port come in contact with salt water. For example, if you're at the beach, remember to keep your accessory away from the sea water. Also, never expose the accessory to any liquid chemicals. For example, if you're washing dishes by hand using liquid detergent, avoid bringing your accessory in contact with the detergent. After exposure to non-fresh water, rinse your accessory, especially the cover for the Micro USB port, using fresh water.

Normal wear and tear along with damage to your accessory can reduce its ability to resist dust or moisture. After using the accessory in water, dry off the areas around the cover for the Micro USB port.

The GPS tracking accuracy may be affected by condensation building up between the device and the user's wrist. To avoid such an impact, regularly check for and clean away any moisture.

If the microphone gets wet, its function may be impacted until the water has completely dried. Please note that the drying time can be up to 3 hours depending on the environment. During this time, you can, however, use other features of the accessory that do not utilise the microphone. All compatible accessories, including chargers and Micro USB cables, are not water and dust resistant on their own.

Your warranty does not cover damage or defects caused by abuse or improper use of your accessory (including use in environments where the relevant IP rating limitations are exceeded). If you have any further questions about the use of your products, refer to our Customer support service for help.

IP (Ingress Protection) rating

Your accessory has an IP rating, which means it has undergone certified tests to measure its resistance levels to both dust and water. The first digit in the two-digit IP rating indicates the level of protection against solid objects, including dust. The second digit indicates how resistant the device is to water.

Resistance to solid objects and dust	Resistance to water
IP0X: No special protection	IPX0: No special protection
IP1X: Protected against solid objects > 50 mm in diameter	IPX1: Protected against dripping water

IP2X. Protected against solid objects > 12.5 mm in diameter	IPX2. Protected against dripping water when tilted up to 15 degrees from normal position
IP3X. Protected against solid objects > 2.5 mm in diameter	IPX3. Protected against spraying water
IP4X. Protected against solid objects > 1 mm in diameter	IPX4. Protected against splashing water
IP5X. Protected against dust; limited ingress (no harmful deposit)	IPX5. Protected against water jet spray for at least 3 minutes
IP6X. Dust tight	IPX6. Protected against heavy jet spray for at least 3 minutes
	IPX7. Protected against the effects of immersion in up to 1 metre of water for 30 minutes
	IPX8. Protected against the effects of continued immersion in water depths greater than 1 metre. The exact conditions are specified for each device by the manufacturer.

Legal information

Sony SWR50



Prior to use, please read the *Important information* leaflet separately provided.

This User guide is published by Sony Mobile Communications Inc. or its local affiliated company, without any warranty. Improvements and changes to this User guide necessitated by typographical errors, inaccuracies of current information, or improvements to programs and/or equipment, may be made by Sony Mobile Communications Inc. at any time and without notice. Such changes will, however, be incorporated into new editions of this User guide.

All rights reserved.

©2014 Sony Mobile Communications Inc.

Interoperability and compatibility among Bluetooth® devices varies. Device generally supports products utilizing Bluetooth spec. 1.2 or higher, and Headset or Handsfree profile.

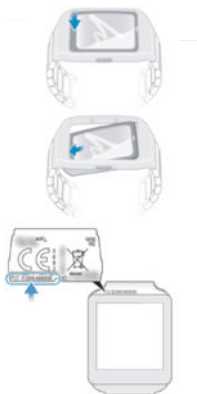
Sony is the trademark or registered trademark of Sony Corporation. Bluetooth is the trademark of the Bluetooth (SIG) Inc. and is used under license. All other marks are the property of their respective owners. All rights reserved.

All product and company names mentioned herein are the trademarks or registered trademarks of their respective owners. Any rights not expressly granted herein are reserved. All other trademarks are property of their respective owners.

Visit www.sonymobile.com for more information.

All illustrations are for illustration only and may not accurately depict the actual accessory.

To view the regulatory information



DECLARATION OF CONFORMITY FOR SWR50

We, Sony Mobile Communications AB of

Nya Vattentorget

SE-221 88 Lund, Sweden

declare under our sole responsibility that our product

Sony type **RD-0090**

to which this declaration relates is in conformity with the appropriate standards **EN 300 328:V1.8.1, EN 301 489-17:V2.2.1, EN 301 489-3:V1.6.1, EN 302 291-2:V1.1.1, EN 300 440-2:V1.4.1, EN 62209-2:2010 and EN 60 950-1:2006 +A11:2009+A1:2010+A12:2011** following the provisions of, Radio Equipment and Telecommunication Terminal Equipment directive 1999/5/EC.

Lund, July 2014

CE 0682



Pär Thuresson,
Quality Officer, SVP, Quality & Customer Services

FCC Statement

This device complies with Part 15 of the FCC rules. Operation is subject to the following two conditions: (1) This device may not cause harmful interference, and (2) This device must accept any interference received, including interference that may cause undesired operation.



Any change or modification not expressly approved by Sony may void the user's authority to operate the equipment.

This equipment has been tested and found to comply with the limits for a Class B digital device, pursuant to Part 15 of the FCC Rules. These limits are designed to provide reasonable protection against harmful interference in a residential installation. This equipment generates, uses and can radiate radio frequency energy and, if not installed and used in accordance with the instructions, may cause harmful interference to radio communications. However, there is no guarantee that interference will not occur in a particular installation.

If this equipment does cause harmful interference to radio or television reception, which can be determined by turning the equipment off and on, the user is encouraged to try to correct the interference by one or more of the following measures:

- Reorient or relocate the receiving antenna.
- Increase the separation between the equipment and receiver.
- Connect the equipment into an outlet on a circuit different from that to which the receiver is connected.
- Consult the dealer or an experienced radio/TV technician for help.

AVISO IMPORTANTE PARA MÉXICO

La operación de este equipo está sujeta a las siguientes dos condiciones: (1) es posible que este equipo o dispositivo no cause interferencia perjudicial y (2) este equipo o dispositivo debe aceptar cualquier interferencia, incluyendo la que pueda causar su operación no deseada.

Para consultar la información relacionada al número del certificado, refiérase a la etiqueta del empaque y/o del producto.

Alimentación: 5,0 Vcc

Industry Canada Statement

This device complies with RSS-210 of Industry Canada.

Operation is subject to the following two conditions: (1) this device may not cause interference, and (2) this device must accept any interference, including interference that may cause undesired operation of the device.

This Class B digital apparatus complies with Canadian ICES-003.

Cet appareil numérique de la classe B est conforme à la norme NMB-003 du Canada.

Avis d'industrie Canada

Le présent appareil est conforme aux CNR d'Industrie Canada applicables aux appareils radio exempts de licence.

L'exploitation est autorisée aux deux conditions suivantes: (1) l'appareil ne doit pas produire de brouillage, et, (2) l'utilisateur de l'appareil doit accepter tout brouillage radioélectrique subi, même si le brouillage est susceptible d'en compromettre le fonctionnement.

Cet appareil numérique de la classe B est conforme à la norme NMB-003 du Canada.

Les dispositifs fonctionnant dans la bande 5150-5250 MHz sont réservés uniquement pour une utilisation à l'intérieur afin de réduire les risques de brouillage préjudiciable aux systèmes de satellites mobiles utilisant les mêmes canaux. Le gain maximal d'antenne permis pour les dispositifs utilisant les bandes 5250-5350 MHz et 5470-5725 MHz doit se conformer à la limite de p.i.r.e. Le gain maximal d'antenne permis (pour les dispositifs utilisant la bande 5725-5825 MHz) doit se conformer à la limite de p.i.r.e. spécifiée pour l'exploitation point à point et non point à point, selon le cas. De plus, les utilisateurs devraient aussi être avisés que les utilisateurs de radars de haute puissance sont désignés utilisateurs principaux (c.-à-d., qu'ils ont la priorité) pour les bandes 5 250-5 350 MHz et 5 650-5 850 MHz et que ces radars pourraient causer du brouillage et/ou des dommages aux dispositifs LAN-EL.